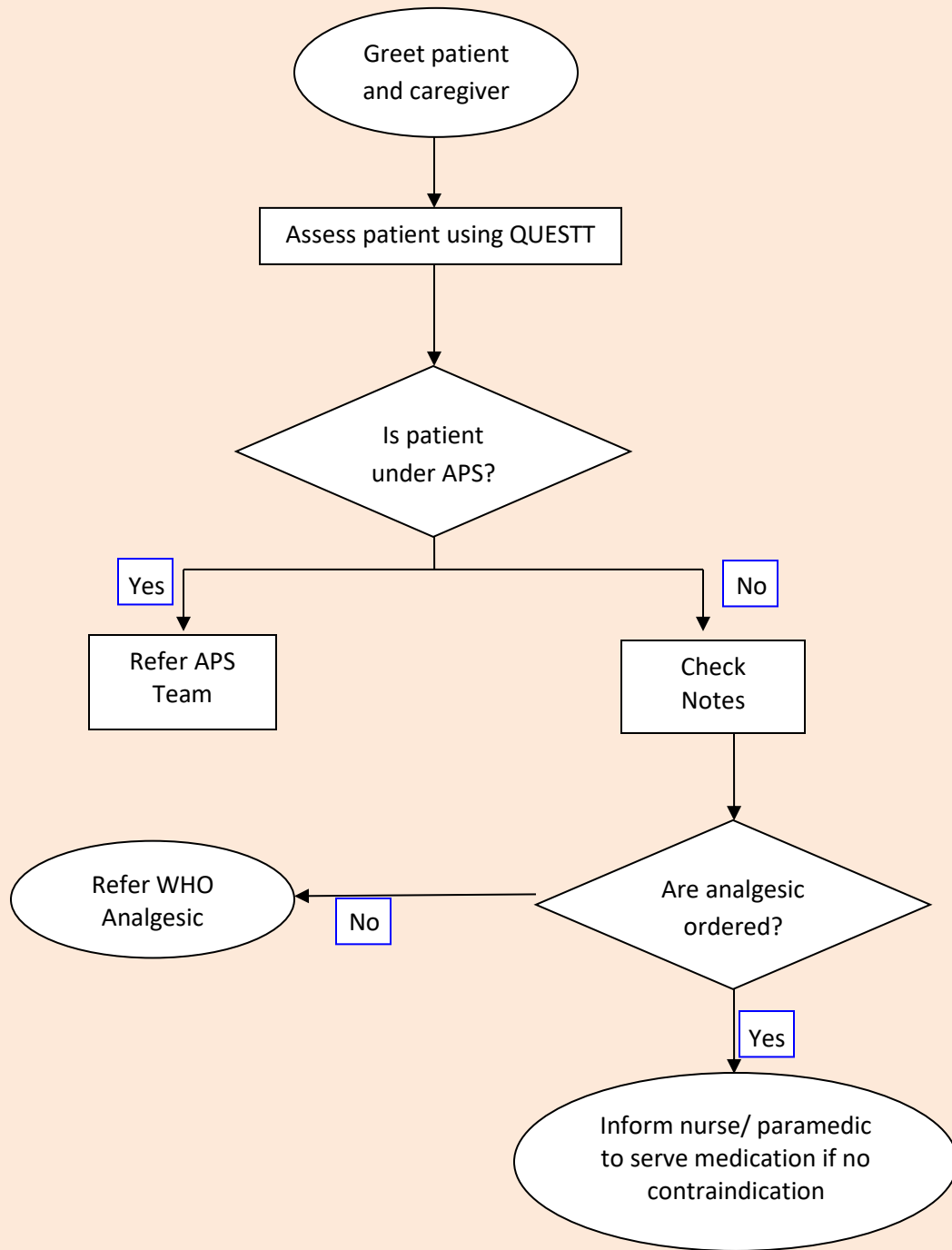
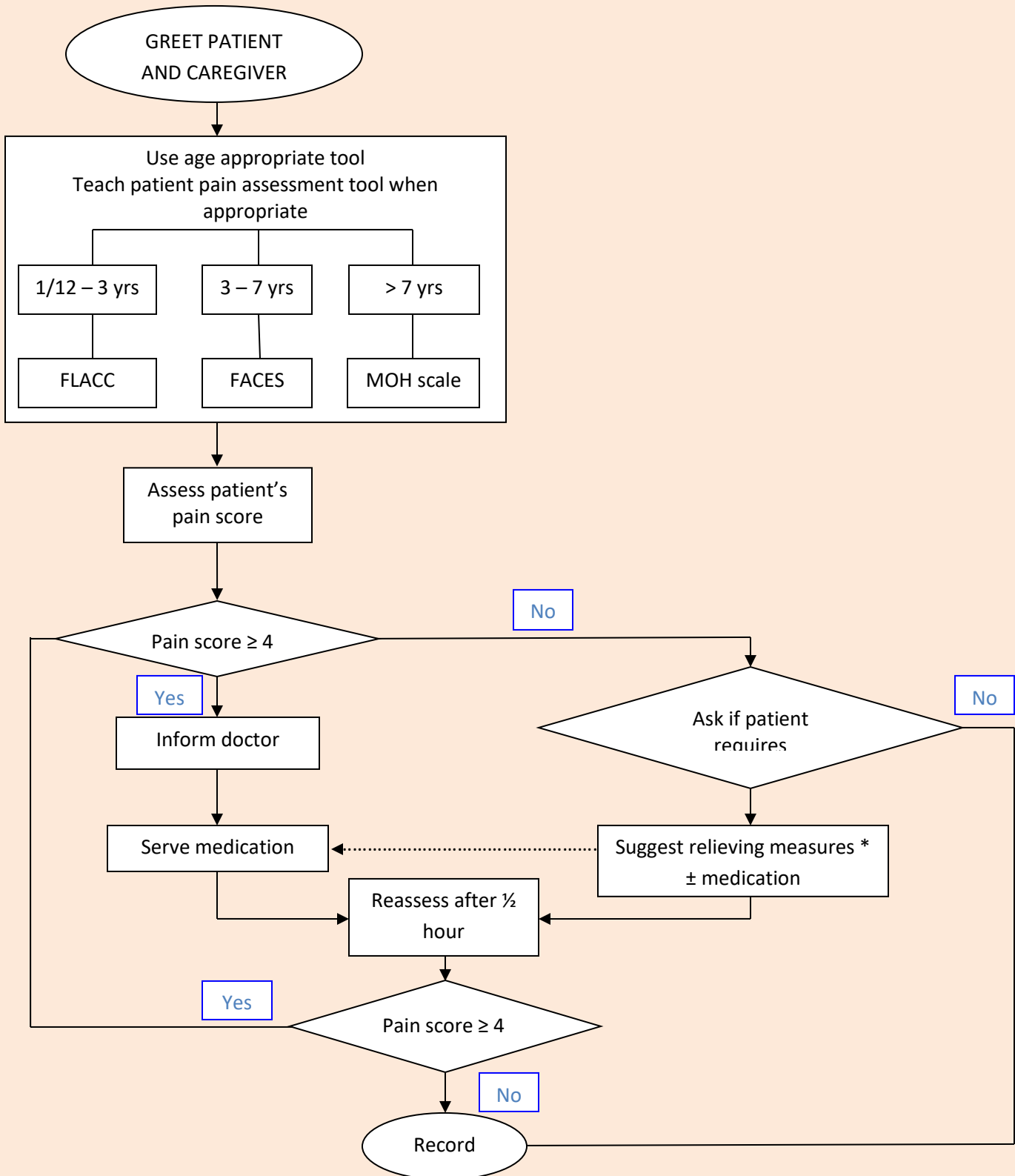


**FLOW CHART FOR INITIAL ASSESSMENT OF PAIN IN CHILDREN > 1 MONTH OLD  
(DOCTORS IN WARD)**



APS: Acute Pain Service

## FLOW CHART FOR INITIAL ASSESSMENT OF PAIN IN CHILDREN > 1 MONTH OLD (NURSES IN WARD)



\*Relieving measure include touch, distraction, music, deep breathing, heat or cold pack